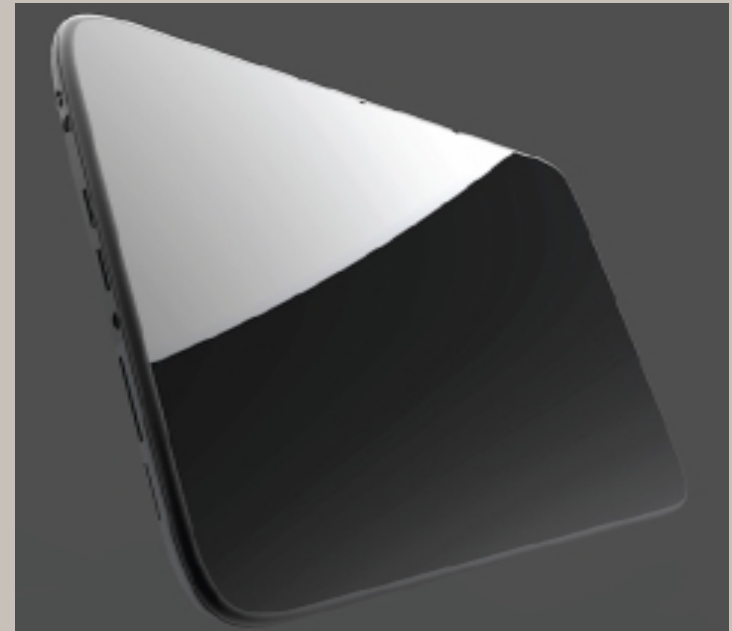


# DreamBook ePad L11 HD

**PIONEER  
COMPUTERS**

# DreamBook ePad L11 HD

- **Design Concept & Features**
- **Scenario Application**
- **Hardware Specification**



Finger Friendly

**PIONEER**  
**COMPUTERS**



↔ Slim but comfortable border

**PIONEER**  
**COMPUTERS**

# Thinnest spec we provide

iPad 13.4 mm



14 mm (with 4800mAh Battery Pack)



# DreamBook ePad L11 HD



# DreamBook ePad L11 HD

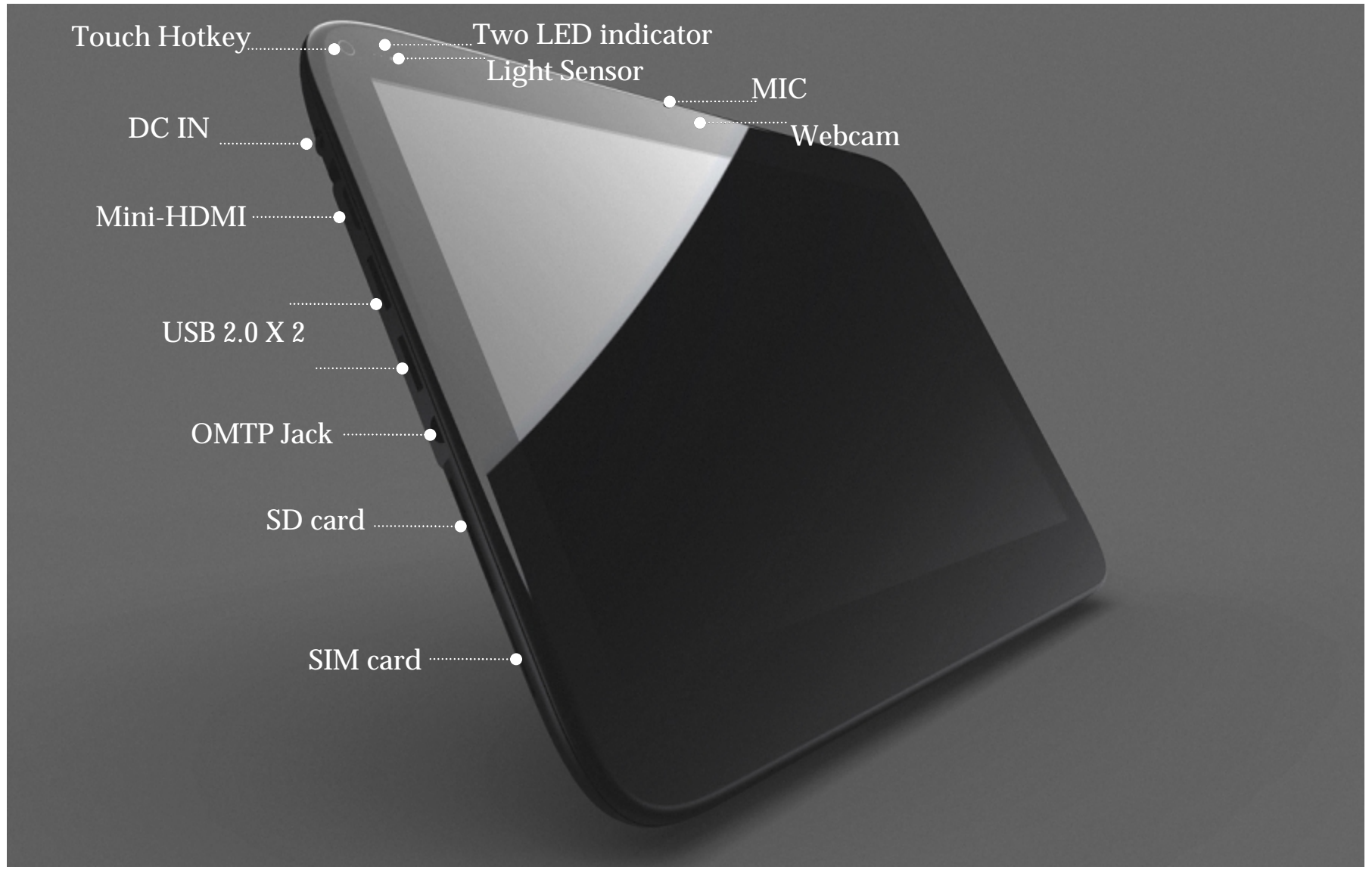


Power

Speaker

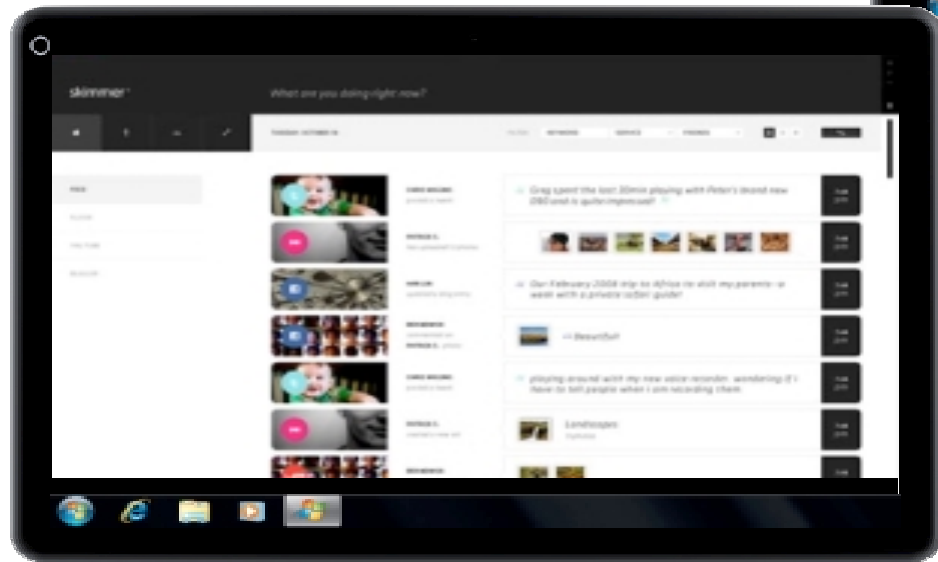
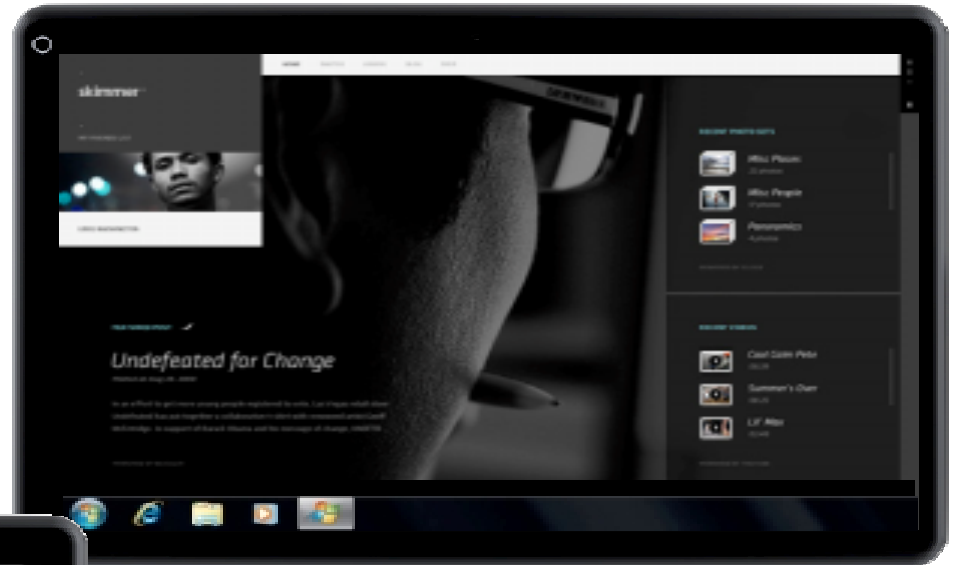
Speaker

# DreamBook ePad L11 HD



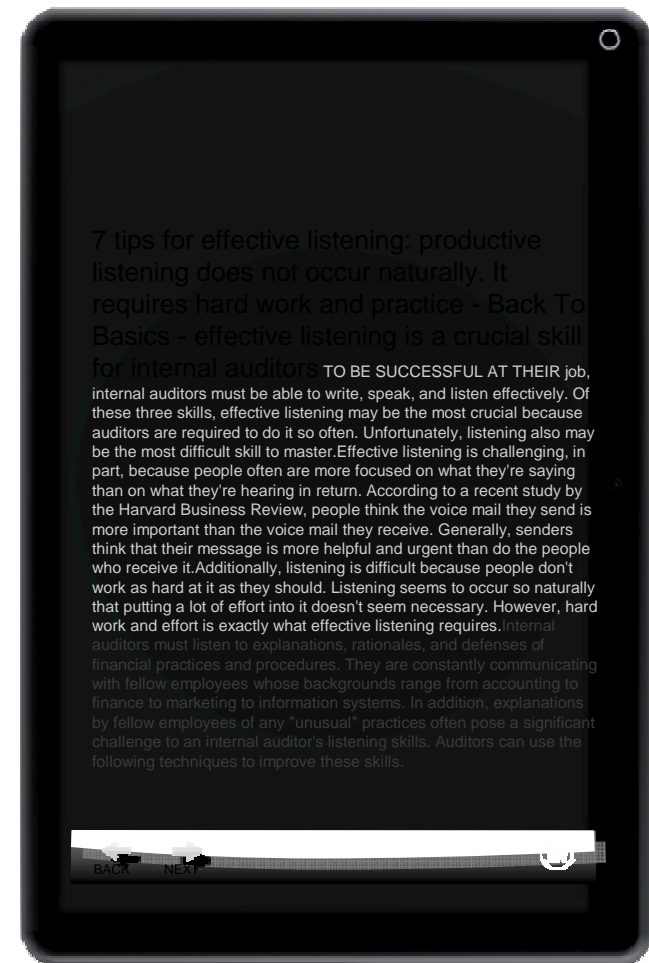
# Social Network

- Twitter, FaceBook, Flickr...etc  
embedded in Hotkey Application



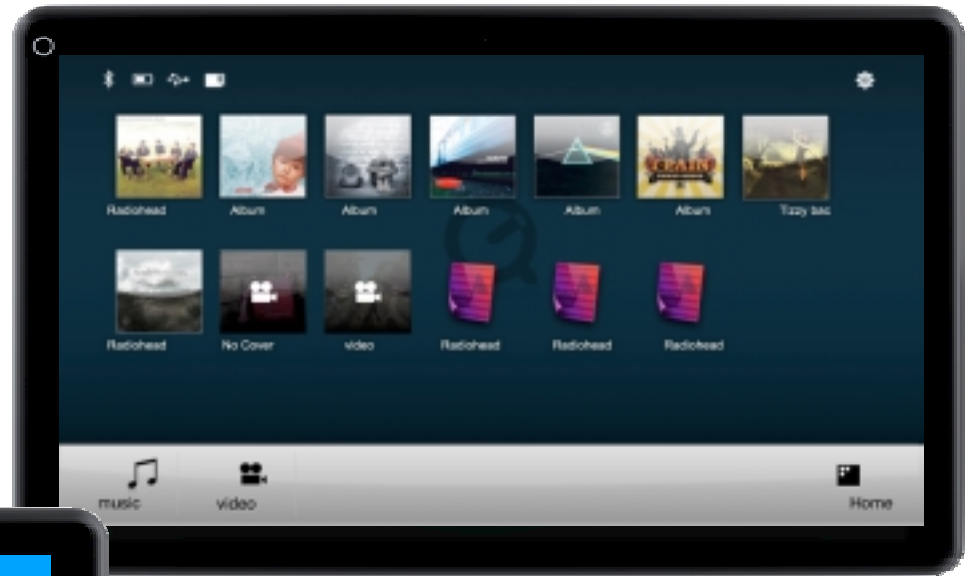
# Full screen Browsing e-reader Experience

- Provide HD content display without limitation by 1366X768 resolution



# Personal Media Station

- Music, Photo and Video...etc  
Personal Media embedded in  
Hotkey Application



# Motion Gaming Console

- Limited to Graphic (Option) and gaming application



# Globe Positioning System (Option) Limited to Map source provider



# Functional accessory (Concept)

Fabric case includes **keyboard** and **battery**, with its feasibility to extend battery life and easier for typing usage.



# Unique Features



- **Combination Device :**

- Personal computing , eReader, personal media devices and mobile internet device .



- **Rich Internet Experience :**

- Powerful application is more significant then low price strategy .



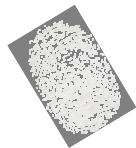
- **Cloud Service :**

- Cloud service and now cloud computing



- **Light and Thin :**

- Means it provide more easier to carry in portable use.



- **Multi Touch :**

- Sensing technology enables user to interact with system with two fingers at a time.




- **Enhancement of Graphic Performance (Option)**

- Support Full HD ION2 1080p video content (H.264/MPEG4/VC1...)
  - Excellent Video playback fluency
  - Significant reduction of CPU usage rate
-

# Hardware Specification


<b>Size</b>	<b>295mm x 195mm x 14mm</b>
<b>Weight</b>	<b>~940g (with 3G)</b>
<b>Casing</b>	Mg-Al ALLOY
<b>BT</b>	Bluetooth 2.1 + EDR
<b>WIFI</b>	Integrated 802.11b/g/n
<b>GPS (Option)</b>	Mini PCI interface GPS card
<b>WWAN module (Option)</b>	WCDMA / HSPA 7.2Mbps (A-GPS)
<b>Processor type</b>	<b>Intel Pineview-M N450 + ICH8M</b>
<b>Processor speeds</b>	1.66GHz , 667MHz, 512K of L2 (200MHz)
<b>Graphics</b>	Integrated Graphics Media Accelerator 500
<b>Discrete Graphics (Option)</b>	nVidia ION2 GT218M 1080p HD Video Accelerator
<b>Memory</b>	DDR2 667/800MHz <b>1GB</b> , 1 SO-DIMM slot (up to 2GB)
<b>Mass Storage</b>	<b>SSD 16GB/32GB</b> (up to 64GB ) by Mini PCI-E (Need to check pin assignment)
<b>LCD Module</b>	LCD TFT 11.6' HD GLARE(1366*768 16:9)
<b>Touch Panel</b>	Capacity Multi Touch (Real Two points)
<b>Battery</b>	Embedded Lithium-ion Polymer 2-cell (7.4V, <b>4800mAh</b> , 2S1P)
<b>Camera</b>	<b>1.3M</b> pixel (fix focus)
<b>Support OS</b>	Microsoft Windows 7 Home Premium or above for best performance
<b>Interface</b>	DC-in x1, USB port x2, OMTP jack x1, SDHC slot x1, SIM card slot x1, Mini-HDMI (upscaling 1080p from 720p source) x1, Hotkey x1, 26 pins connector (for Docking)x1
<b>G-Sensor</b>	Display orientation (3-axis sensing)
<b>Audio</b>	Built-in Speaker (1.5W) x2 , Mic x1

# Compare with Apple iPad

	DreamBook ePad L11	 Apple / iPad
Size	295mm x 195mm x 14mm	242.8mm x 189.7mm x 13.4mm
Weight	~940g (with 3G)	680g, 730g (with 3G)
Casing	Mg-Al ALLOY	TBD
BT	Bluetooth 2.1 + EDR	Bluetooth 2.1 + EDR
WIFI	Integrated 802.11b/g/n	Integrated 802.11b/g/n
GPS (Option)	Mini PCI interface GPS card	AGPS
WWAN module (Option)	WCDMA/HSPA 7.2Mbps (A-GPS)	3G module
Processor type	Intel Pineview-M N450	Apple A4 (system-on-a-chip, ARM Base)
Processor speeds	1.6GHz , 667MHz, 512K (200MHz)	1GHz
Graphics	Intel Integrated Graphics Media Accelerator 500 /Discrete ION2 1080p HD Video Accelerator <b>(Option)</b>	Apple A4 (system-on-a-chip)

---

# Compare with Apple iPad

	DreamBook ePad L11	 Apple / iPad
Memory	1GB 800MHz DDR2 (up to 2G)	N/A
Mass Storage Memory	SSD 32GB (64GB option)	SSD 16GB, 32GB, 64GB
LCD Module	TFT LCD 11.6' HD GLARE(1366*768)	IPS LCD 9.7' Glossy Widescreen Capacity Multi-Touch display((1024*768)
Touch Panel	Capacity Multi Touch Panel (Real Two points)	
Battery	Embedded Lithium-ion Polymer 2-cell (35.52Whr, 7.4V, 4800mAh, 2S1P) (Battery Life: Up to 6Hrs)	Built-in 25Whr Rechargeable Lithium-Polymer. Up to 10 hours of surfing the web on Wi-Fi, watching video, or listening to music
Camera	1.3M pixel (fix focus)	N/A
Support OS	Microsoft Windows 7 Home Premium or above	iPhone OS (Mac OS X v10.5.8 or later)
Interface	DC-in x1, USB port x2, OMTP jack x1, SDHC slot x1, SIM card slot x1, Mini-HDMI x1, 26-pin Connector x1	30-pin Connector x1, Audio jack x1, Mic x1
G-Sensor	Display orientation (3-axis sensing)	Support G-Sensor
Audio	Built-in Speaker (1.5W) x2, Microphone x1	Built-in Speaker, Microphone Jack x1, Earphone Jack x1

# Compare with Apple iPad

- DreamBook ePad L11 related extension ability is better than iPad. E.g, SD card/mini HDMI/USB added on...
- OS AP feature comparison (everything iPad can do, DreamBook ePad L11 can do better...)
- IO convenience?



	iPad	ePad L11
I/O port	30 pin dock connector x1 3.5mm headphone jack x1	26 pin dock connector x1 DC-in jack x1 USB port x2 SD card slot x1 SIM card slot x1 OMTP jack x1

